

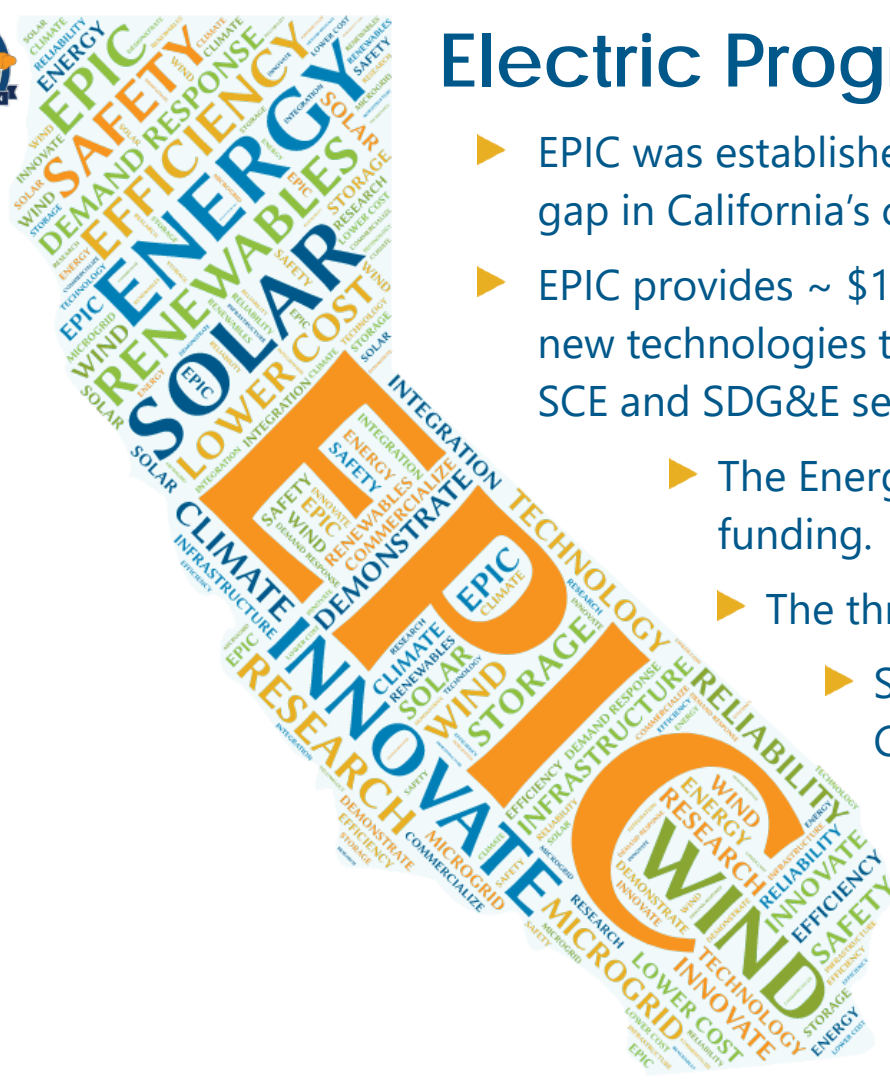


California Energy Commission

Building California's Energy Innovation Ecosystem

CleanTech Meetup
June 21, 2018





Electric Program Investment Charge

- ▶ EPIC was established by the CPUC in 2011 to address a critical gap in California's clean energy policy.
- ▶ EPIC provides ~ \$162 million annually for projects to advance new technologies that will benefit electric ratepayers in PG&E, SCE and SDG&E service territories.
 - ▶ The Energy Commission administers 80% of the funding.
 - ▶ The three utilities collectively administer 20%.
 - ▶ SB 350 provides additional direction to the CEC in its administration of EPIC funding.



Statewide Resources through EPIC to Help Develop and Scale New Energy Technologies

For Technology Developers:

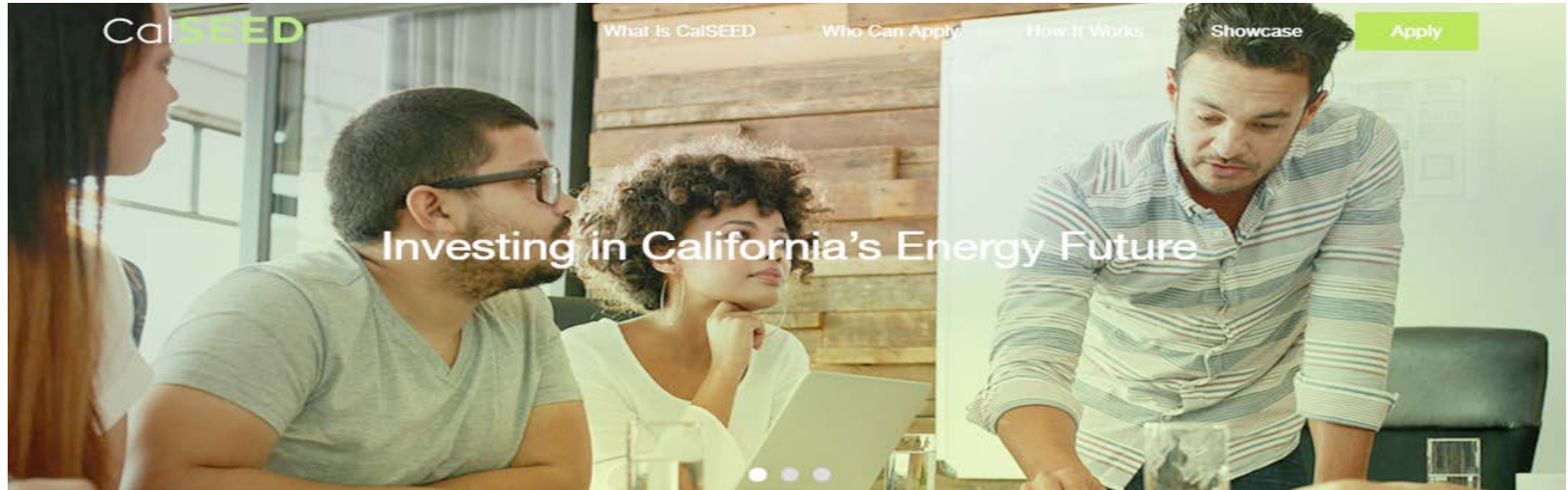
- ▶ Proof-of-Concept funding
- ▶ Access to lab and testing space
- ▶ Access to mentors
- ▶ Access to educational materials and resources
- ▶ Bridge funding

For Technology Adopters:

- ▶ Case Studies
- ▶ Product Evaluations
- ▶ Technical Assistance
- ▶ Analytical Tools and Platforms



CalSEED Initiative

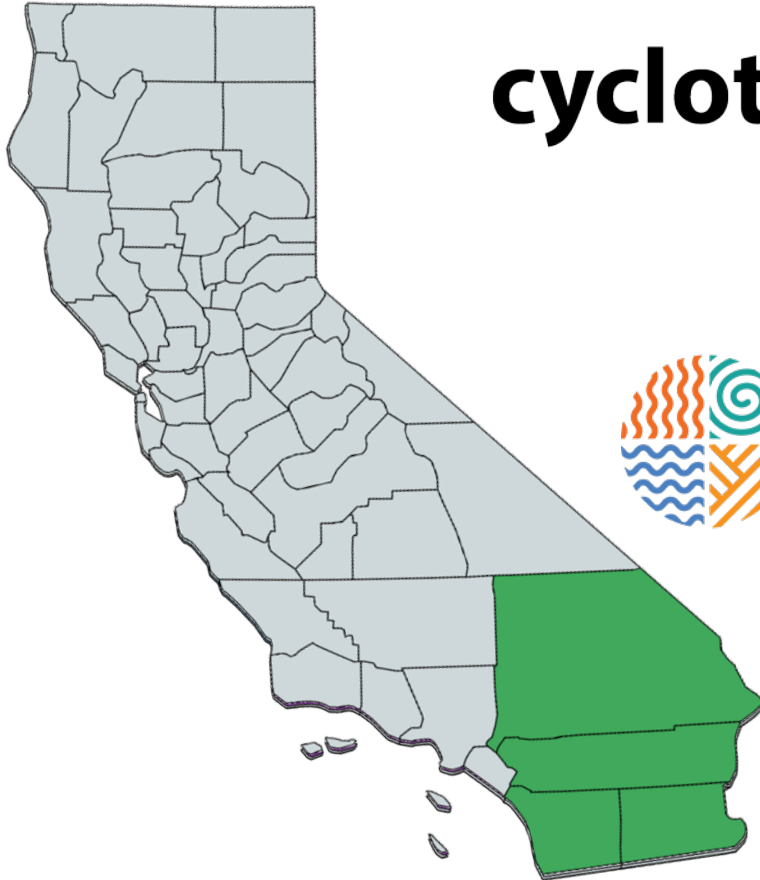


- ▶ Up to \$150,000 for proof-of-concept
- ▶ Comprehensive professional development resources
- ▶ Access to California's best accelerator and incubator programs
- ▶ Operational and technical support
- ▶ Eligible for up to \$450,000 in follow-on funding



Innovation Clusters

cyclotronroad



Energize
California

AN  INITIATIVE

San
Diego
Regional

**ENERGY
INNOVATION**
NETWORK

The background of the slide is a scenic photograph of a coastal landscape. In the foreground, a concrete bridge with a white railing spans a body of water. The bridge has several large, white, curved support structures. In the background, there are steep, rocky cliffs and a small beach area. The sky is overcast with grey clouds. The overall tone is somewhat somber due to the grey sky and the dark colors of the rocks.

Bringing Rapid Innovation Development to Green Energy

A new mechanism to competitively award follow-on funding on a flow-basis for energy technologies that:

- Previously received funding from the Energy Commission, US Department of Energy or other eligible Federal agency.
- Successfully met the technical goals and targets of their previous award.
- Has significant interest from the private sector and a plan for bringing the technology to market in California.



CalTestBed

CalTestBed will accelerate the time it takes for technology developers to move new inventions from the prototype stage into field trials by:

- Creating a statewide network of testing and certification facilities.
- Developing a voucher program for technology developers to access the facilities.
- Organizing customer groups to preview the technologies and specifications.



Statewide Resources through EPIC to Help Develop and Scale New Energy Technologies

For Technology Developers:

- ▶ Proof-of-Concept funding
- ▶ Access to lab and testing space
- ▶ Access to mentors
- ▶ Access to educational materials and resources
- ▶ Bridge funding

For Technology Adopters:

- ▶ Case Studies
- ▶ Product Evaluations
- ▶ Technical Assistance
- ▶ Analytical Tools and Platforms



Procurement Assistance

Energy Product Evaluation Hub

The California Energy Product Evaluation (Cal-EPE) Hub evaluates commercially available energy efficiency, renewable distributed generation, and distributed storage products and publishes the results. The products tested are primarily suited for institutional and commercial customers. Cal-EPE Hub is operated by the University of California, Davis and funded by the California Energy Commission.

LEARN MORE



MYGREENCAR

HOME HOW IT WORKS MISSION COMPARE CARS EV RANGE ABOUT US



Public and Corporate Procurement Platforms

Brining MyGreenCar technology to fleets

CAR SHOPPING? OR JUST CURIOUS? TAKE A VIRTUAL TEST DRIVE

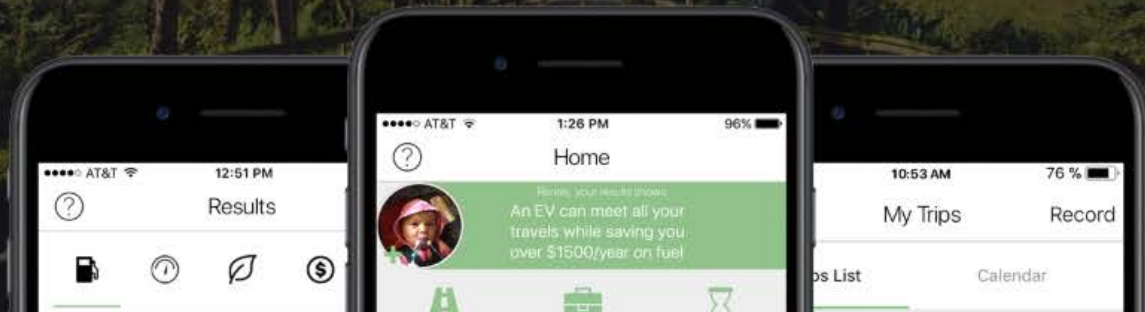
WELCOME TO MYGREENCAR



Download on the
App Store



GET IT ON
Google Play



Questions?



Anthony Ng
916-445-5297
Anthony.Ng@energy.ca.gov